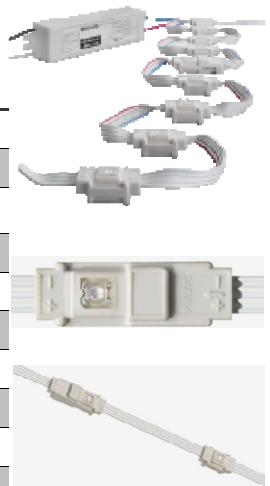


## Affinium LED String - Low & Medium Power

- Broad light output angle of 130° for colored versions and 105° for the white version
- Flexible LED strings can be cut at any desired position, as long as the first LED installed after the driver is a LED Driver Device (LDD)
- Can be mounted directly on a sign backplate with clips or tape for quick, easy sign creation
- Energy consumption only around 4 W/m (e.g. red LEDs) compared with 20 W/m for neon
- Fully outdoor-proof (IP66)
- Instant starting, even at temperatures as low as -20°C
- Operating ambient temperature range -20 to +70°C
- Mercury-free and lead-free (RoHS compliant)
- The LED Power Drivers which operate the string have slim dimensions and copper-core insulated wires for easy connection
- Available software tools to support customer presentation: LED String Layout Creator (design tool) and Cost Savings Calculator (shows savings based on actual customer data)
- Ideal for signlighting; channel letters and bandlighting

Part Number	Type	Watt	Colour	Angle	Package (pcs/pack)
128423	LEDSTR20M/MP/AM	0.228	yellow-594	120°	1
128434	LEDSTR20M/MP/BL	0.228	blue-476	120°	1
128445	LEDSTR20M/MP/WW	0.228	white-3000	105°	1
128456	AFFLED/20MRL/AM	0.221	yellow-594	130°	1
128467	AFFLED/20MRL/BL	0.233	blue-476	130°	1
128478	AFFLED/20MRL/GR	0.233	green-526	130°	1
128489	AFFLED/20MRL/RD	0.221	red-624	130°	1
128500	AFFLED/20MRL/WW	0.114	white-3000	105°	1
128511	AFFLED/20MRL/CW	0.114	white-6300	105°	1
128522	LEDSTR20M/MP/CW	0.228	white-6300	105°	1



## Affinium LED String kit

- Complete, easy-to-install system comprising a flexible line of wire-connected LEDs with Philips LED Power Driver, connectors, wiring, tape pads and Quick Installation Guide.
- Available for string lengths of 2m & 6m (flexible strings can be cut at any desired position)
- For architectural and decorative lighting applications.

Part Number	Type	Watt	Colour	Angle	Package (pcs/pack)
128533	AFFLED/2M/RD	0,221	red-624	130°	10
128544	AFFLED/2M/AM	0,221	yellow-594	130°	10
128555	AFFLED/2M/BL	0,233	blue-476	130°	10
128566	AFFLED/2M/GR	0,233	green-526	130°	10
128577	AFFLED/2M/WW	0,114	white-3000	105°	10
128588	AFFLED/2M/CW	0,114	white-6300	105°	10
128599	AFFLED/6M/AM	0,221	yellow-594	130°	5
128610	AFFLED/6M/BL	0,233	blue-476	130°	5
128621	AFFLED/6M/GR	0,233	green-526	130°	5
128632	AFFLED/6M/RD	0,221	red-624	130°	5
128643	AFFLED/6M/WW	0,114	white-3000	105°	5
128654	AFFLED/6M/CW	0,114	white-6300	105°	5



## LED Strip kit

- Choice of mono colors (red, green, blue, amber, cool white and warm white) or color-changing strips
- Control unit included with color-changing strips
- Low energy consumption (approx. 5W per kit with mono colors and approx. 14W per kit with color-changing); far lower than conventional light sources
- Good luminance, uniformity and light output
- Long lifetime (10 000 hours for mono colors, 20 000 hours for white strips)
- Ideal for use in narrow spaces, e.g. where TL is not possible
- IP20 ingress protection (solid objects)
- Mercury-free
- Suitable for indoor use
- Ideal for a wide range of creative decorative or architectural applications, e.g. built into furniture and displays, shelf lighting, wall washing etc.

Part Number	Type	Watt	Colour	Angle	Package (pcs/pack)
128665	LEDSTRIP/BL	0,8	blue-476	50°	20
128676	LEDSTRIP/GR	0,8	green-526	50°	20
128687	LEDSTRIP/RD	0,8	red-630	50°	20
128698	LEDSTRIP/AM	0,8	yellow-590	50°	20
128709	LEDSTRIP/CW	0,8	white-5000	50°	20
128720	LEDSTRIP/RGB	2,6	RGB	55°	20
128731	LEDSTRIP/WW	0,8	white-3500	50°	20



## Intuos LED module system - 20-24V DC

- LED modules contain LUXEON Power LEDs, optics, LED driver electronics, control functions and integrated heat sink to ensure reliable and highly efficient performance
- Choice of LED module shapes: 1 x 4 LEDs rectangular, 2 x 2 LEDs square or single 1 x 1 LED versions
- Choice of LED colours: red, blue, green, amber, cool white or warm white
- Colour consistency of LEDs of same type; each module type is made with LEDs from same colour bin
- Choice of 1W or 3W LED power ratings
- Lumen output calibrated to achieve maximum deviation of  $\pm 15\%$
- Choice of narrow or medium-wide optics
- Xitanium power drivers transform mains supply to 24V DC to operate the LED modules
- Distances of up to 10 m possible between last modules and power supply/control interface using standard cable (0.5 mm<sup>2</sup>)
- Integrated control functions for colour control and dimming
- Control interface for connection to external DALI or DMX control systems to create a range of dynamic lighting effects
- All LED modules are IP67-rated for outdoor or indoor use
- System package includes mechanical module connectors and cable connectors
- Suitable for decorative architectural lighting, e.g. wall washing, cove lighting, feature spots

Part Number	Type	Description	Watt	Colour	Package (pcs/pack)
128742	LMS4/14/932/36D	1x4/36D	4	warm white	5
128753	LMS/MODCONNECT	connector			100
128764	LMS/CBLCONNECT	connector			100
128775	LMS1/11/767/36D	1x1/36D	1	cool white	10
128786	LMS1/11/767/8D	1x1/8D	1	cool white	10
128797	LMS1/11/767/850	1x1/8DX50	1	cool white	10
128808	LMS1/11/932/36D	1x1/36D	1	warm white	10

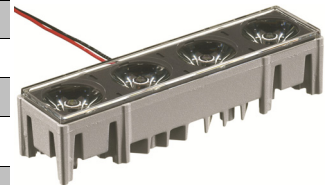
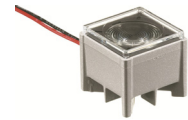


(continue to next page)

## Intuos LED module system - 20-24V DC

(continue from previous page)

Part Number	Type	Description	Watt	Colour	Package (pcs/pack)
128819	LMS1/11/932/8D	1x1/8D	1	warm white	10
128830	LMS1/11/932/850	1x1/8DX50	1	warm white	10
128841	LMS1/11/AM/36D	1x1/36D	1	yellow	10
128852	LMS1/11/AM/8D	1x1/8D	1	yellow	10
128863	LMS1/11/BL/36D	1x1/36D	1	blue	10
128874	LMS1/11/BL/8D	1x1/8D	1	blue	10
128885	LMS1/11/GR/36D	1x1/36D	1	green	10
128896	LMS1/11/GR/8D	1x1/8D	1	green	10
128907	LMS1/11/RD/36D	1x1/36D	1	red	10
128918	LMS1/11/RD/8D	1x1/8D	1	red	10
128929	LMS3/11/763/36D	1x1/36D	3	cool white	10
128940	LMS3/11/763/8D	1x1/8D	3	cool white	10
128951	LMS3/11/763/850	1x1/8DX50	3	cool white	10
128962	LMS3/11/BL/36D	1x1/36D	3	blue	10
128973	LMS3/11/BL/8D	1x1/8D	3	blue	10
128984	LMS3/11/GR/36D	1x1/36D	3	green	10
128995	LMS3/11/GR/8D	1x1/8D	3	green	10
129006	LMS4/14/767/36D	1x4/36D	4	cool white	5
129017	LMS4/14/767/8D	1x4/8D	4	cool white	5
129028	LMS4/14/767/850	1x4/8DX50	4	cool white	5
129039	LMS4/14/932/8D	1x4/8D	4	warm white	5
129050	LMS4/14/932/850	1x4/8DX50	4	warm white	5
129061	LMS4/14/AM/36D	1x4/36D	4	yellow	5
129072	LMS4/14/AM/8D	1x4/8D	4	yellow	5
129083	LMS4/14/BL/36D	1x4/36D	4	blue	5
129094	LMS4/14/BL/8D	1x4/8D	4	blue	5
129105	LMS4/14/GR/36D	1x4/36D	4	green	5
129116	LMS4/14/GR/8D	1x4/8D	4	green	5
129127	LMS4/14/RD/36D	1x4/36D	4	red	5
129138	LMS4/14/RD/8D	1x4/8D	4	red	5
129149	LMS4/14/RGBA850	1x4/8DX50	4	RGBA	5
129160	LMS12/14/763/36D	1x4/36D	12	cool white	5
129171	LMS12/14/763/8D	1x4/8D	12	cool white	5
129182	LMS12/14/763/85	1x4/8DX50	12	cool white	5
129193	LMS12/14/BL/36D	1x4/36D	12	blue	5
129204	LMS12/14/BL/8D	1x4/8D	12	blue	5
129215	LMS12/14/GR/36D	1x4/36D	12	green	5
129226	LMS12/14/GR/8D	1x4/8D	12	green	5
129237	LMS4/22/767/36D	2x2/36D	4	cool white	5
129248	LMS4/22/767/8D	2x2/8D	4	cool white	5
129259	LMS4/22/932/36D	2x2/36D	4	warm white	5
129270	LMS4/22/932/8D	2x2/8D	4	warm white	5
129281	LMS4/22/AM/36D	2x2/36D	4	yellow	5



(continue to next page)

## Intuos LED module system - 20-24V DC

(continue from previous page)

Part Number	Type	Description	Watt	Colour	Package (pcs/pack)
129292	LMS4/22/AM/8D	2x2/8D	4	yellow	5
129303	LMS4/22/BL/36D	2x2/36D	4	blue	5
129314	LMS4/22/BL/8D	2x2/8D	4	blue	5
129325	LMS4/22/GR/36D	2x2/36D	4	green	5
129336	LMS4/22/GR/8D	2x2/8D	4	green	5
129347	LMS4/22/RD/36D	2x2/36D	4	red	5
129358	LMS4/22/RD/8D	2x2/8D	4	red	5
129369	LMS12/22/763/36	2x2/36D	12	cool white	5
129380	LMS12/22/763/8D	2x2/8D	12	cool white	5
129391	LMS12/22/BL/36D	2x2/36D	12	blue	5
129402	LMS12/22/BL/8D	2x2/8D	12	blue	5
129413	LMS12/22/GR/36D	2x2/36D	12	green	5
129424	LMS12/22/GR/8D	2x2/8D	12	green	5



## Intuos LED control interface

- Converts a standard DALI or DMX signal into a control signal for the LED modules; this signal is added to the low-voltage power line and sent to the LED modules
- Auto detection of DALI or DMX control signals
- Must be used in series with a stable 24V DC power supply (Philips LED power driver recommended)
- Push-in connectors
- Two wire connection to LED modules and/or components

### Applications

- Dimming and dynamic color applications with LMS LED modules in decorative and architectural lighting
- Cove lighting in hotel lobbies and rooms, bar area
- Wall washing in shops, shopwindows and reception area's
- Spot lighting in showcases, product displays and artwork
- Integrated lighting in furniture
- Local general lighting in lifts, escalators, corridors and toilet area's

Part Number	Type	Description	Watt	Package (pcs/pack)
129435	LED/CONTROL/INT	Intuos CI 36W 20-24VDC DALI/DMX	36	5



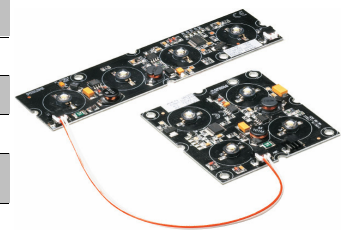
## LED Construction System

The Philips LED Component System offers the highest possible design freedom and flexibility in creating all kinds of LED lighting solutions. The system consists of LED components, Titanium LED Power Drivers and control interface units, all available individually. The LED components contain LEDs, LED driver electronics and controls mounted on a metal-core PCB for reliable and efficient operation. A range of optics and jumper cables to connect the boards complete the system package. Dynamic lighting effects can be created by connecting external control systems such as DALI or DMX via the control interface. Both dimming and addressing of individual LED colors are possible.

### Applications

- Architectural lighting, e.g. wall washing, cove lighting, feature spots
- Accent lighting in retail environments
- Showcases, display cabinets, signs
- Gardens and parks
- Indoor and outdoor orientation lighting, e.g. paths
- Emergency and security lighting

Part Number	Type	Description	Watt	Colour	Package (pcs/pack)
<b>129446</b>	LCS4/14/763	1x4	4	cool white	10
<b>129457</b>	LCS4/14/932	1x4	4	warm white	10
<b>129468</b>	LCS4/14/AM	1x4	4	yellow	10
<b>129479</b>	LCS4/14/BL	1x4	4	blue	10
<b>129490</b>	LCS4/14/GR	1x4	4	green	10
<b>129501</b>	LCS4/14/RD	1x4	4	red	10
<b>129512</b>	LCS12/14/763	1x4	12	cool white	10
<b>129523</b>	LCS12/14/BL	1x4	12	blue	10
<b>129534</b>	LCS12/14/GR	1x4	12	green	10
<b>129545</b>	LCS4/22/763	2x2	4	cool white	10
<b>129556</b>	LCS4/22/932	2x2	4	warm white	10
<b>129567</b>	LCS4/22/AM	2x2	4	yellow	10
<b>129578</b>	LCS4/22/BL	2x2	4	blue	10
<b>129589</b>	LCS4/22/GR	2x2	4	green	10
<b>129600</b>	LCS4/22/RD	2x2	4	red	10
<b>129611</b>	LCS12/22/763	2x2	12	cool white	10
<b>129622</b>	LCS12/22/BL	2x2	12	blue	10
<b>129633</b>	LCS12/22/GR	2x2	12	green	10
<b>129644</b>	LCS/JUMPERCABLE	jumper cable			100
<b>129655</b>	LCS/OPTIC/12D	Optic 12D			80
<b>129666</b>	LCS/OPTIC/30D	Optic 30D			80
<b>129677</b>	LCS/OPTIC/50D	Optic 50D			80
<b>129688</b>	LCS/OPTIC/50D12	Optic 50x12D			80



## GreenPower LED string

- Broad light output angle of 130°, ensuring uniform growth light distribution
- Easy installation; can be mounted directly on a shelf with clips or tape
- Instant starting, even at temperatures as low as -20°C
- The LED Power Drivers which operate the string have slim dimensions and copper-core insulated wires for easy connection
- Available in deep red, white and blue; color recognition possible when using the white version

### Applications

- Multilayers, propagation, in horticulture

Part Number	Type	Watt	Colour	Package (pcs/pack)
129699	GRNPOWLED/LF/BL	0.14	blue	1
129710	GRNPOWLED/LF/WH	0.19	white	1
129721	GRNPOWLED/MF/RD	0.35	deep red	1



## Accessories for GreenPower LED string

Part Number	Type	Package (pcs/pack)
129732	AFFLED/CONXTEND	10
129743	AFFLED/CONENDCP	10
129754	LPMCONN.TOOL3	1
129765	AFFLED/FCABLE4W	1
129776	AFFLED/CLIP	200
129787	AFFLED/TAPE1700	1
129798	AFFLED/TAPE210	1

