

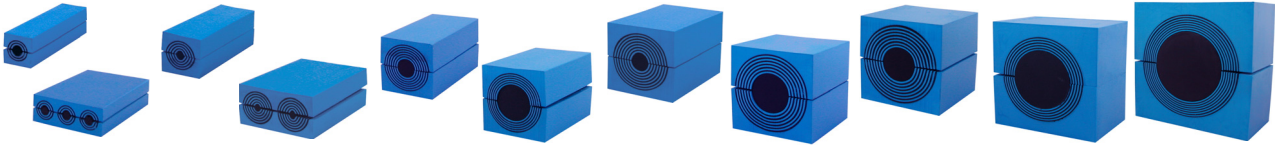
RM Modules

Material: Halogen free cross linkable rubber compound based on Ethylene-Propylene rubber (EPDM)

Colour: blue/black

Application: A multidiameter sealing module consists of two halves with removable layers and a centre core. One single module can seal a cable or pipe of several different diameters simply by peeling away layers. Frames of Roxtec product line Regular are filled with standard RM modules at 60 millimetres depth which together cover a diameter range of 3.0 to 99.0 millimetres.

Multidiameter modules with core



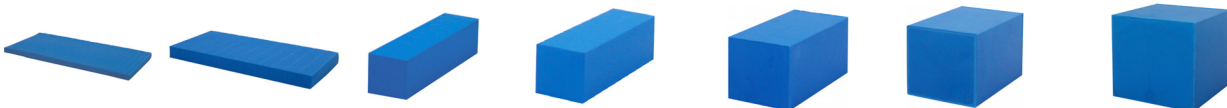
Part Number	Type	Number of cables/pipes	For cable/pipe Ø (mm)	External Dimensions (mm)	Weight (kg)	Package (pcs/pack)
				HxW (D=60mm)		
101004	RM 15	1	0+ 3,0-11,0	15x15	0,01 - 0,02	64
101015	RM 15w40	3	0+ 3,5-10,5	15x40	0,04 - 0,05	24
101026	RM 20	1	0+ 4,0-14,5	20x20	0,02 - 0,04	36
101037	RM 20w40	2	0+ 3,5-16,5	20x40	0,04 - 0,07	18
101048	RM 30	1	0+ 10,0-25,0	30x30	0,04 - 0,08	16
101059	RM 40	1	0+ 21,5-34,5	40x40	0,07 - 0,14	9
101070	RM 40 10-32	1	0+ 9,5-32,5	40x40	0,07 - 0,14	9
101081	RM 60	1	0+ 28,0-54,0	60x60	0,13 - 0,33	4
101092	RM 60 24-54	1	0+ 24,0-54,0	60x60	0,13 - 0,33	4
101103	RM 90 KIT w/core	1	0+ 48,0-71,0	90x90	0,39 - 0,72	1
101114	RM 120 KIT w/core	1	0+ 67,5-99,0	120x120	0,62 - 1,25	1

Multidiameter modules without core



Part Number	Type	Number of cables/pipes	For cable/pipe Ø (mm)	External Dimensions (mm)	Weight (kg)	Package (pcs/pack)
				HxW (D=60mm)		
101125	RM 60 woc	1	28,0-54,0	60x60	0,13 - 0,26	4
101136	RM 90 woc	1	48,0-71,0	90x90	0,39 - 0,56	1
101147	RM 120 woc	1	67,5-99,0	120x120	0,62 - 0,94	1

Solid compensation modules



Part Number	Type	External Dimensions (mm)	Weight (kg)	Package (pcs/pack)
		H x W (D=60mm)		
101158	RM 5/0x24	5x120	0,06	24
101169	RM 10/0x12	10x120	0,12	12
101180	RM 15/0	15x 15	0,02	64
101191	RM 20/0	20x 20	0,04	36
101202	RM 30/0	30x 30	0,08	16
101213	RM 40/0	40x 40	0,15	9
101224	RM 60/0	60x 60	0,33	4

Frames GHM

Material: Primed, mild steel

Application: For applications where welding is not suitable. The flange has a pre-defined hole pattern adapted to handle the exposure levels the frame has been tested for. The frame is delivered with a TSL 15x6 sealing strip. The GHM frame's low weight makes it easier to handle during installation.



Part Number	Type	Frame Openings	Packing Space (mm)	External Dimensions (mm)		Weight (kg)
				H x W		
101609	GHM 2x1 primed	1	60 x 120	233 x 253		3,4
101620	GHM 2x2 primed	2	60 x 120	233 x 383		5,4
101631	GHM 2x3 primed	3	60 x 120	233 x 514		7,4
101642	GHM 4x1 primed	1	120 x 120	292 x 253		4,1
101653	GHM 4x2 primed	2	120 x 120	292 x 383		6,3
101664	GHM 4x3 primed	3	120 x 120	292 x 514		8,6
101675	GHM 6x1 primed	1	180 x 120	350 x 253		4,8
101686	GHM 6x2 primed	2	180 x 120	350 x 383		7,3
101697	GHM 6x3 primed	3	180 x 120	350 x 514		9,8
101708	GHM 8x1 primed	1	240 x 120	398 x 241		5.5
101719	GHM 8x2 primed	2	240 x 120	410 x 383		8.3
101730	GHM 8x3 primed	3	240 x 120	410 x 514		11.1

R Frames, acid proof

Material: Stainless steel AISI 316

Application: Round frame for installation in pipe sleeves or round holes. The compression is integrated in the frame and is used together with standard RM modules. They are supplied with a net installed on the back side for protection during horizontal installations (except R 70 and R 75). The frame can be cut open for installation around existing cables or pipes.



Part Number	Type	Packing Space (mm)	External Dimensions (mm)		Weight (kg)
			H x W		
101741	R 70 AISI 316	40 x 40	70 x 70		0,5
101752	R 75 AISI 316	40 x 40	75 x 70		0,5
101763	R 100 AISI 316	60 x 60	100 x 85		0,6
101774	R 125 AISI 316	80 x 80	125 x 70		1,1
101785	R 127 AISI 316	80 x 80	127 x 70		1,1
101796	R 150 AISI 316	90 x 90	150 x 70		1,6
101807	R 200 AISI 316	120 x 120	200 x 70		2,6

Frames S

Material: Primed, mild steel

Application: Metal frame without flange, intended for welding. It is available as a single opening frame and in combinations with several openings in width and/or height.

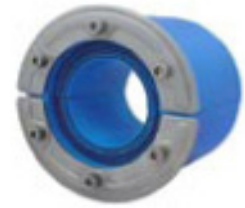


Part Number	Type	Frame Openings	Packing Space (mm)	External Dimensions (mm)		Weight (kg)
				H	W	
101235	S 1x1 primed	1	60 x 60	121	81	1,6
101246	S 2x1 primed	1	60 x 120	121	141	2,2
101257	S 2x2 primed	2	60 x 120	121	271	3,9
101268	S 2x3 primed	3	60 x 120	121	402	5,5
101279	S 2x4 primed	4	60 x 120	121	532	7,1
101290	S 2x5 primed	5	60 x 120	121	663	8,7
101301	S 2x6 primed	6	60 x 120	121	793	10,3
101312	S 3x1 primed	1	120 x 60	180	81	2,3
101323	S 4x1 primed	1	120 x 120	180	141	2,8
101334	S 4x2 primed	2	120 x 120	180	271	4,7
101345	S 4x3 primed	3	120 x 120	180	402	6,6
101356	S 4x4 primed	4	120 x 120	180	532	8,5
101367	S 4x5 primed	5	120 x 120	180	663	10,3
101378	S 4x6 primed	6	120 x 120	180	793	12,2
101389	S 4x7 primed	7	120 x 120	180	924	14,1
101400	S 4x8 primed	8	120 x 120	180	1054	16,0
101411	S 4x9 primed	9	120 x 120	180	1185	17,9
101422	S 5x1 primed	1	180 x 60	238	81	2,8
101433	S 6x1 primed	1	180 x 120	238	141	3,3
101444	S 6x2 primed	2	180 x 120	238	271	5,5
101455	S 6x3 primed	3	180 x 120	238	402	7,7
101466	S 6x4 primed	4	180 x 120	238	532	9,8
101477	S 6x5 primed	5	180 x 120	238	663	12,0
101488	S 6x6 primed	6	180 x 120	238	793	14,2
101499	S 6x7 primed	7	180 x 120	238	924	16,3
101510	S 6x8 primed	8	180 x 120	238	1054	18,5
101521	S 6x9 primed	9	180 x 120	238	1185	20,7
101532	S 7x1 primed	1	240 x 60	298	81	3,3
101543	S 8x1 primed	1	240 x 120	298	141	3,9
101554	S 8x2 primed	2	240 x 120	298	271	6,1
101565	S 8x3 primed	3	240 x 120	298	402	8,2
101576	S 8x4 primed	4	240 x 120	298	532	10,4
101587	S 8x5 primed	5	240 x 120	298	663	12,6
101598	S 8x6 primed	6	240 x 120	298	793	14,7

RS Sealing, acid proof, with core

Material: Stainless steel AISI 316

Application: Round seal for single cable or pipe entries in metal sleeves or core drilled holes. The two halves, with multidiameter technology, are adjustable to fit different cable or pipe diameters. The split construction makes it easy to install around existing cables or pipes.



Part Number	Type	For Cable (mm)	External Dimensions (mm)		Weight
			H x W		
101818	RS 25 AISI 316	0+3.6-12	25 x 40		0.04
101829	RS 31 AISI 316	0+4.0-17	31 x 40		0.06
101840	RS 43 AISI 316	0+4.0-23	43 x 78		0.2
101851	RS 50 AISI 316	0+8.0-30	50 x 78		0.3
101862	RS 68 AISI 316	0+26.0-48	68 x 78		0.5
101873	RS 75 AISI 316	0+26.0-48	75 x 78		0.7
101884	RS 100 AISI 316	0+48.0-70	100 x 83		1,00
101895	RS 125 AISI 316	0+66.0-98	125x83		1.6

SL Sleeves, without flange

Material: Primed, mild steel

Application: The Roxtec Sleeves are available with or without flange. Suitable for Roxtec round frames and entry seals. Attachment by bolting, welding or casting. Fit Roxtec R, RS and RS OMD.



Part Number	Type	Dimensions (mm)			Fits Frame/Seal	Weight (kg)
		ext.Ø	int.Ø	Length		
101906	SLR 70 primed	83	71,5	55	R 70	0,6
101917	SLR 75 primed	89	76,5	55	R 75	0,7
101928	SLR 100 primed	114	101,0	55	R 100	0,9
101939	SLR 125 primed	140	126,0	55	R 125	1,2
101950	SLR 127 primed	140	128,0	55	R 127	1,1
101961	SLR 150 primed	164	151,0	55	R 150	1,4
101972	SLR 200 primed	214	201,0	55	R 200	1,8
101983	SLRS 25 primed	34	25,5	35	RS 25	0,1
101994	SLRS 31 primed	40	31,5	35	RS 31	0,1
102005	SLRS 43 primed	52	44,0	65	RS 43	0,3
102016	SLRS 50 primed	63	51,0	65	RS 50	0,5
102027	SLRS 68 primed	83	69,5	65	RS 68	0,8
102038	SLRS 75 primed	89	76,5	65	RS 75	0,8
102049	SLRS 100 primed	114	101,0	65	RS 100	1,2
102060	SLRS 125 primed	140	126,0	65	RS 125	1,5
102071	SLRS 150 primed	164	151,0	65	RS 150	1,6
102082	SLRS 175 primed	189	176,0	55	RS 175	1,6
102093	SLRS 200 primed	214	201,0	55	RS 200	2,0
102104	SLRS 225 primed	239	227,0	55	RS 225	2,2
102115	SLRS 250 primed	264	252,0	55	RS 250	2,5
102126	SLRS 300 primed	314	302,0	55	RS 300	3,0
102137	SLRS 350 primed	364	352,0	55	RS 350	3,4
102148	SLRS 400 primed	414	402,0	55	RS 400	3,9
102159	SLRS 450 primed	464	452,0	55	RS 450	4,4
102170	SLRS 500 primed	514	502,0	55	RS 500	4,8
102181	SLRS 550 primed	564	552,0	55	RS 550	5,3
102192	SLRS 600 primed	614	602,0	55	RS 600	5,8
102203	SLRS 644 primed	658	646,0	55	RS 644	6,2

Stayplates

Application: Roxtec Stayplates are used for pull-out resistance against forces in cables and pipes. To be inserted between rows of modules in frames with a rectangular packing space and no built-in compression.



Galvanized

Part Number	Type	Fits packing space	Weight (kg)
		W (mm)	
102214	Stayplate 120 galv	120	0,10
102225	Stayplate 60 galv	60	0,06

Acid proof stainless steel


Part Number	Type	Fits packing space	Weight (kg)
		W (mm)	
102236	Stayplate 120 AISI 316	120	0,10
102247	Stayplate 60 AISI 316	60	0,06

TSL sealing strips

Material: Halogen free cross linkable rubber compound based on Ethylene-Propylene rubber (EPDM)

Application: They can be used as gaskets in bolted installations with both round and rectangular flanged frames.

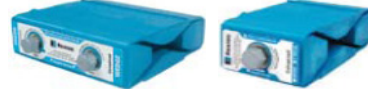
Part Number	Type
102258	TSL 0.6
102269	TSL 1.0
102280	TSL 50X18



Wedge

Application: The Roxtec Wedge is used in frames with a rectangular packing space without built-in compression. Compresses and seals the installation of cables, pipes, modules and stayplates.

Galvanized



Part Number	Type	External Dimensions W (mm)	Weight (kg)	Notes
102291	Wedge kit galv	120(wedge)	1,50	includes 1 Wedge 120,5 Stayplates,1 Wedge Clip,1 Lubricant & installation instructions
102302	Wedge 120 galv	120	0,80	
102313	Wedge 60 galv	60	0,40	


Acid proof stainless steel



Part Number	Type	External Dimensions W (mm)	Weight (kg)	Notes
102324	Wedge kit galv AISI 317	120(wedge)	1,50	includes 1 Wedge 120,5 Stayplates,1 Wedge Clip,1 Lubricant & installation instructions
102335	Wedge 120 galv AISI 317	120	0,80	
102346	Wedge 60 galv AISI 317	60	0,40	

Lubricants

Application: Natural tallow is used to lubricate the sealing modules, Roxtec Wedge and the inside of the frame. This provides even compression, a secure seal.

Part Number	Type	
102357	Lubricant 10 ml	
102368	Lubricant 25 ml	